



Sullivan Taunton Bay

A private woodland setting provides the idyllic backdrop for this great coastal retreat on the shore of Taunton Bay. The architectural design of the cottage with its expansive presence of glass and wrap around deck seems to effortlessly integrate the cozy interior with the natural beauty of its surroundings. This seasonal home has an open living concept with two bedrooms and one bath. The shoreline is rocky with 287 feet of deep water frontage and the exposure is westerly for the brilliant sunsets. Furnished.

Offered At: \$395,000

Facts:

Price: \$395,000
Town: Sullivan
Registry: Hancock County
Book/Page: 3277/52
Zoning: Shoreland
Taxes: 3,387.18
Restrictions: Shoreland Zoning
Survey: N/A
Soils Test: Yes
Approximate Lot Size: 2 +/- Acres
Water Frontage: 287 +/- Feet
Bedrooms: 2
Bathrooms: 1
Other Information: TURNKEY SALE
with the exception of a few personal items.



"We do the most on the coast!"

Call Today Toll Free

1-877-945-7154

www.coastalagency.com

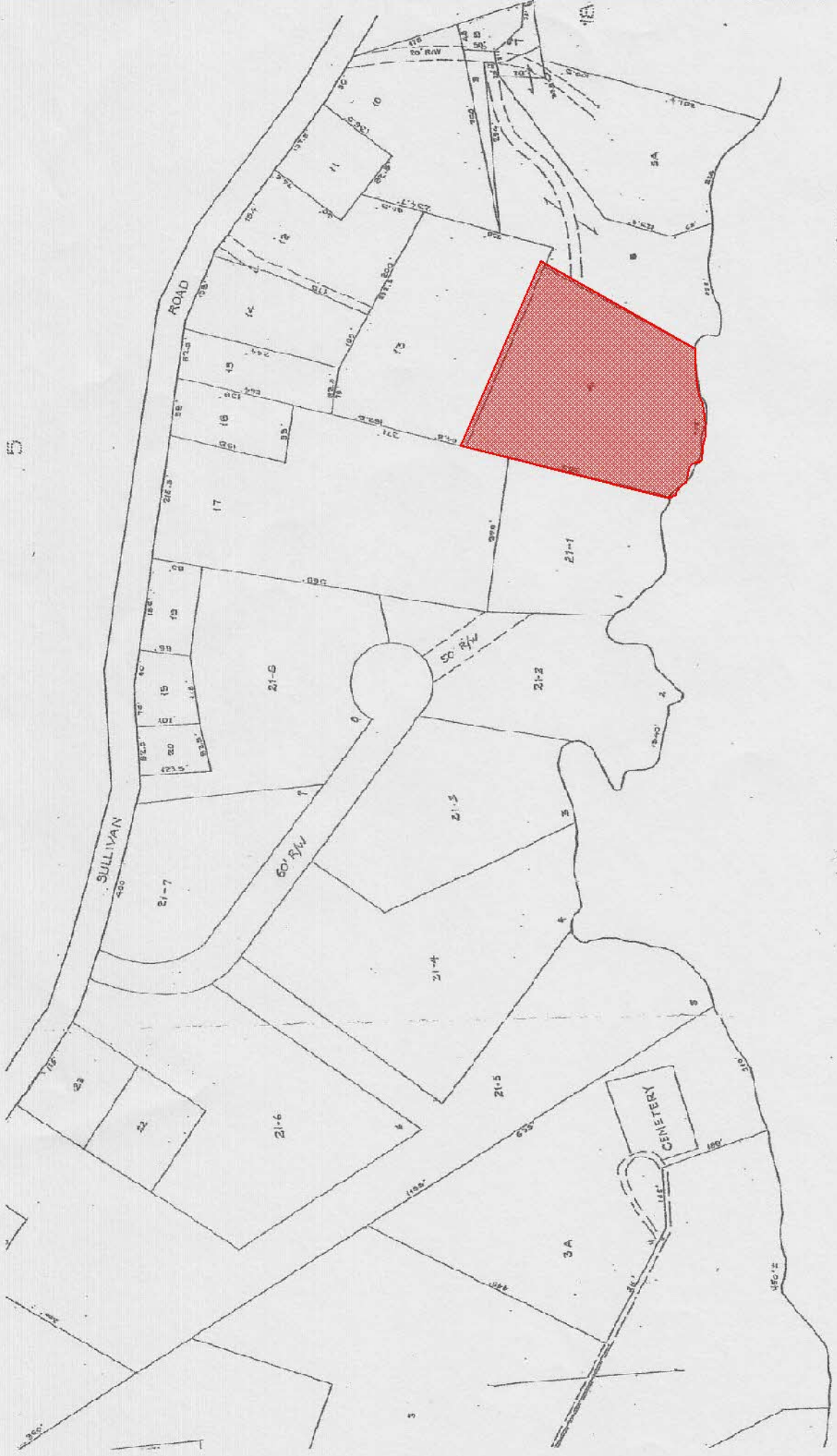


"We do the most on the coast!"

Call Today Toll Free

1-877-945-7154

www.coastalagency.com



5

MAR 31 2002

Taunton Bay

MAP CORRECTIONS COMMENCING 1992
 MADE BY
 JOSEPH J. WELSH, R.L.S. SULLIVAN MAINE

PROPERTY MAP
 TOWN OF SULLIVAN
 HANCOCK COUNTY, MAINE

PREPARED BY
 JAMES W. SEWALL COMPANY OLD TOWN, MAINE
 SCALE 1 INCH = 100 FEET

For Assessment Purposes
 Not to be used for Conveyances

