



Milbridge, Bold Open Ocean Estate Lot

This spectacular lot has 6.5 +/- acres with 460 +/- feet of bold granite beachfront. Privately situated and ideally located to take advantage of magnificent open ocean views. Mature trees set within manicured lot with driveway in place. Exceptional location within easy driving distance to Acadia National Park and numerous amenities in nearby Ellsworth. Unique opportunity to own a prime oceanfront property!

Offered At: \$395,000

FACTS

Price: \$395,000
Town: Milbridge
Registry: Washington County
Book/Page: 3228/204
Tax Map/Lot: 11B/82-B
Zoning: Shoreland
Survey: Yes
Soils: Yes
Approximate lot size: 6.5 Acres
Water Frontage: 460 +/- Feet
Other Amenities: Cleared of undergrowth and shrubs, driveway in place.



"We do the most on the coast!"

**Call Today Toll Free
1-877-945-7154**

Ellsworth- 207-667-4757

Machiasport- 207-255-5900

Bangor- 207-945-3131

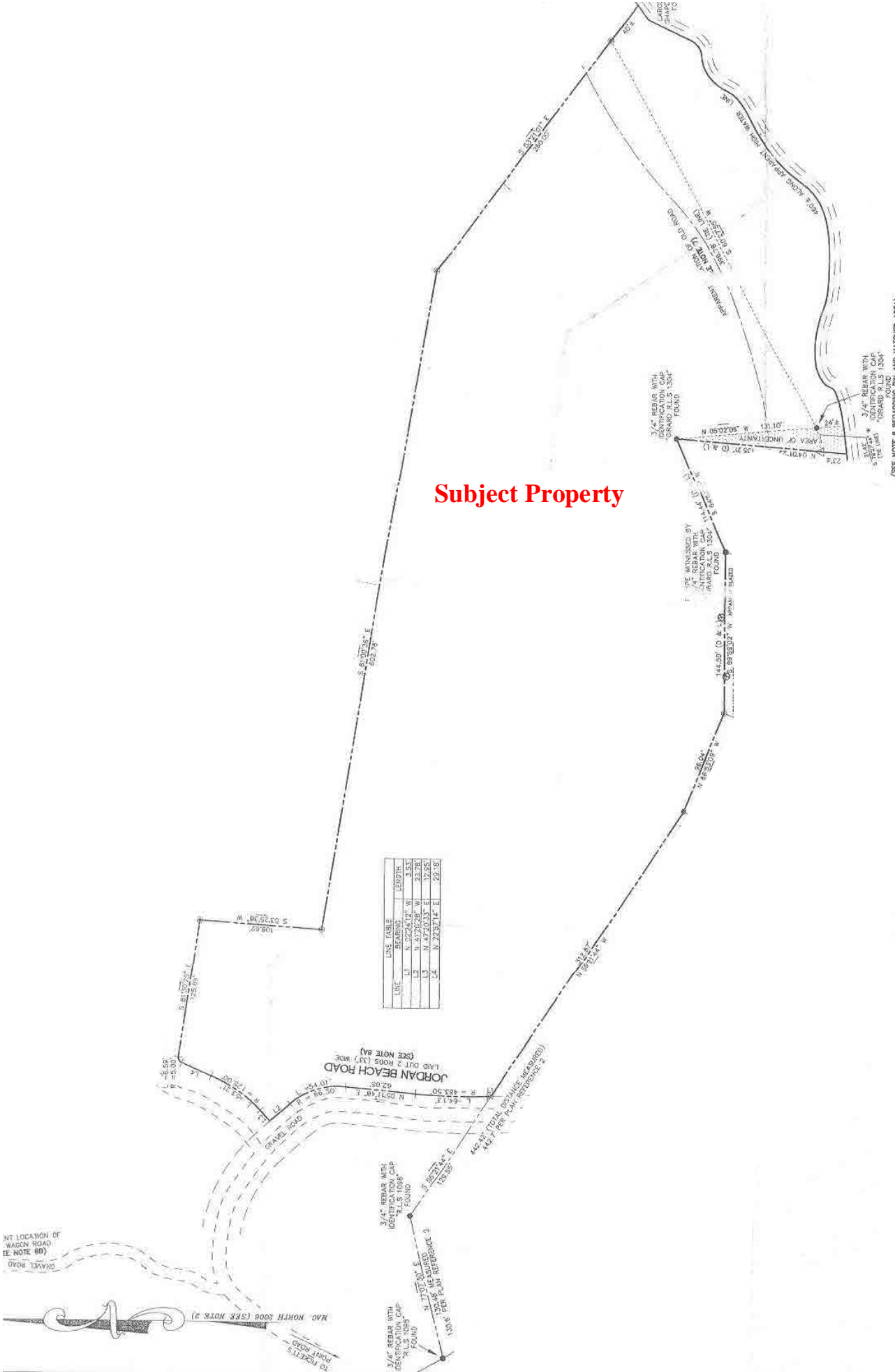
www.coastalagency.com



NT LOCATION OF WAGON ROAD (SEE NOTE 00)



MAG NORTH 2008 (SEE NOTE 2)



LINE	BEARING	LENGTH
L1	S 81°07'24\"/>	

Subject Property

(SEE NOTE B REGARDING PIN AND HATCHED AREA)

CERTIFICATION:

STATE OF MARYLAND