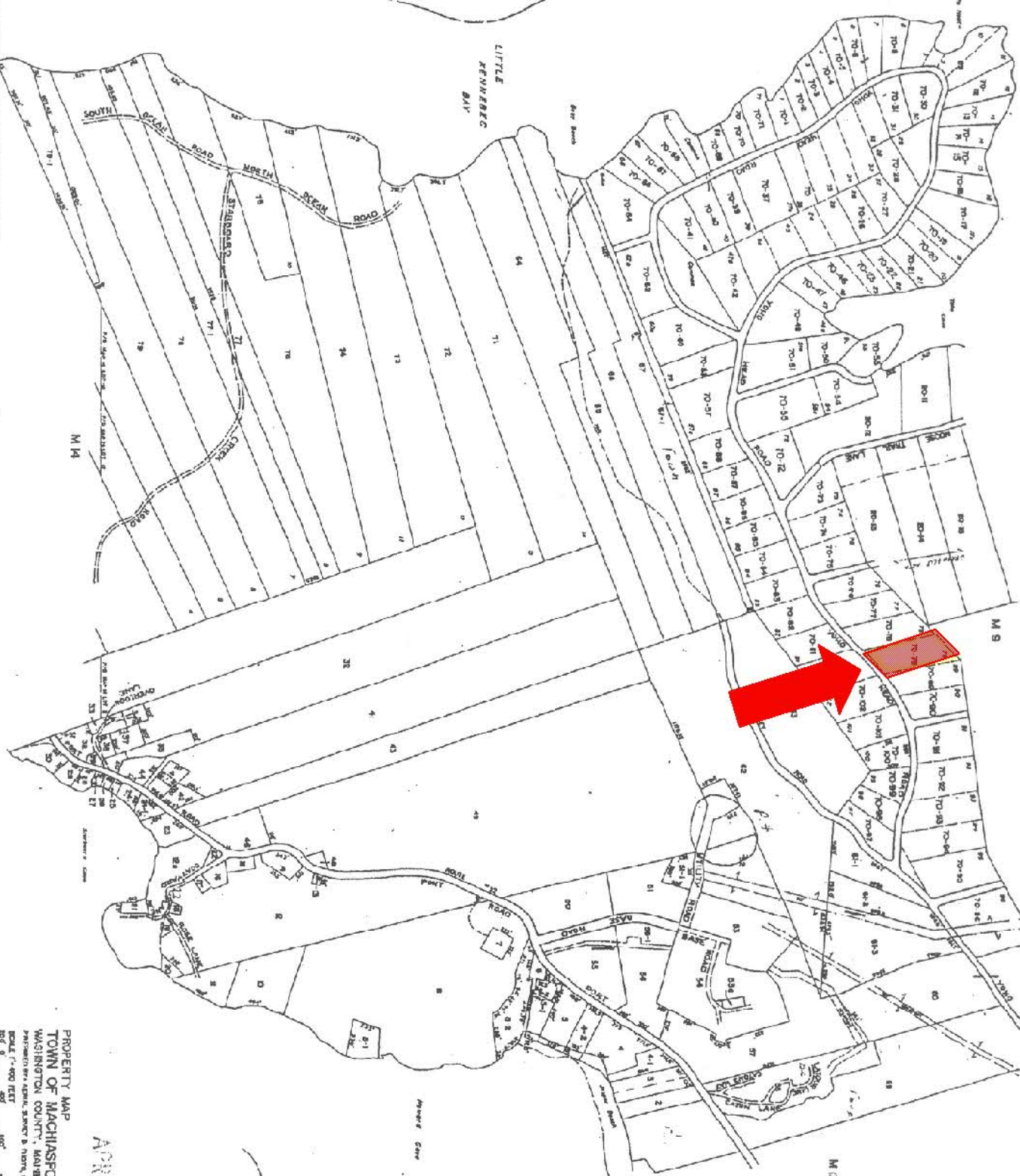


ROQUE BLUFFS

LITTLE KENNEDY BAY



M 14

M 9

M 13

LUBNER
 MAPS, INC.
 1000 WEST 100th St.
 MACHIAS, ME 04849

FOR ASSESSMENT PURPOSES ONLY. NOT TO BE USED FOR CONVEYANCE.

APR 01 200

PROPERTY MAP
 TOWN OF MACHIASPORT
 WASHINGTON COUNTY, MAINE
 PREPARED BY AERIAL SURVEY & MAPS, INC., CONCORD, NH
 SCALE 1" = 400 FEET
 100' 200' 300' 400' 500' 600' 700' 800' 900' 1000'

Common Boat Landing



Yoho Head, Machiasport 3.26 +/- Acres, Ocean Access

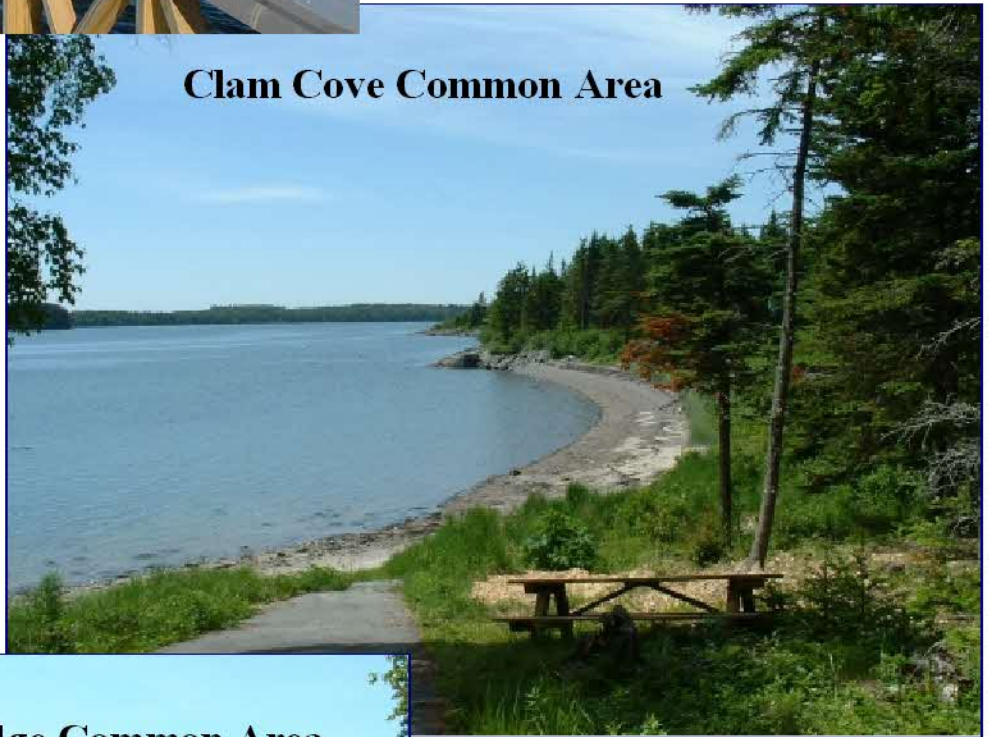
This nicely wooded interior lot affords ample privacy in a peaceful setting. Deeded access to nearby Clam Cove and Hooper's Ledge Common areas plus a private common dock, provides access to the Atlantic Ocean at all tides for boating, kayaking, and other waterfront activities. Enjoy the spectacular sights of Yoho Head including bald eagles flying overhead, moose emerging from the woods, and seals sunning on the rocks along the shoreline. Yoho Head is a unique and desirable peninsula community with many amenities!

Offered At: \$39,900

FACTS

Price: \$39,900
Town: Machiasport
Registry: Washington County
Book/Page: 3280/35 (a portion)
Tax Map/Lot: 12/70-79
Taxes: \$275.65
Restrictions: Protective Covenants
Survey: Yes
Soils Test: Yes
Approximate lot size: 3.26 Acres
Water Frontage: Common Area Access
Other Amenities: Security entrance gate, on-site caretaker, paved road, and electric at road.

Clam Cove Common Area



Hooper's Ledge Common Area



"We do the most on the coast!"

Call Today Toll Free

1-877-945-7154

Ellsworth- 207-667-7511

Machiasport- 207-255-5900

Bangor- 207-945-3131

www.coastalagency.com